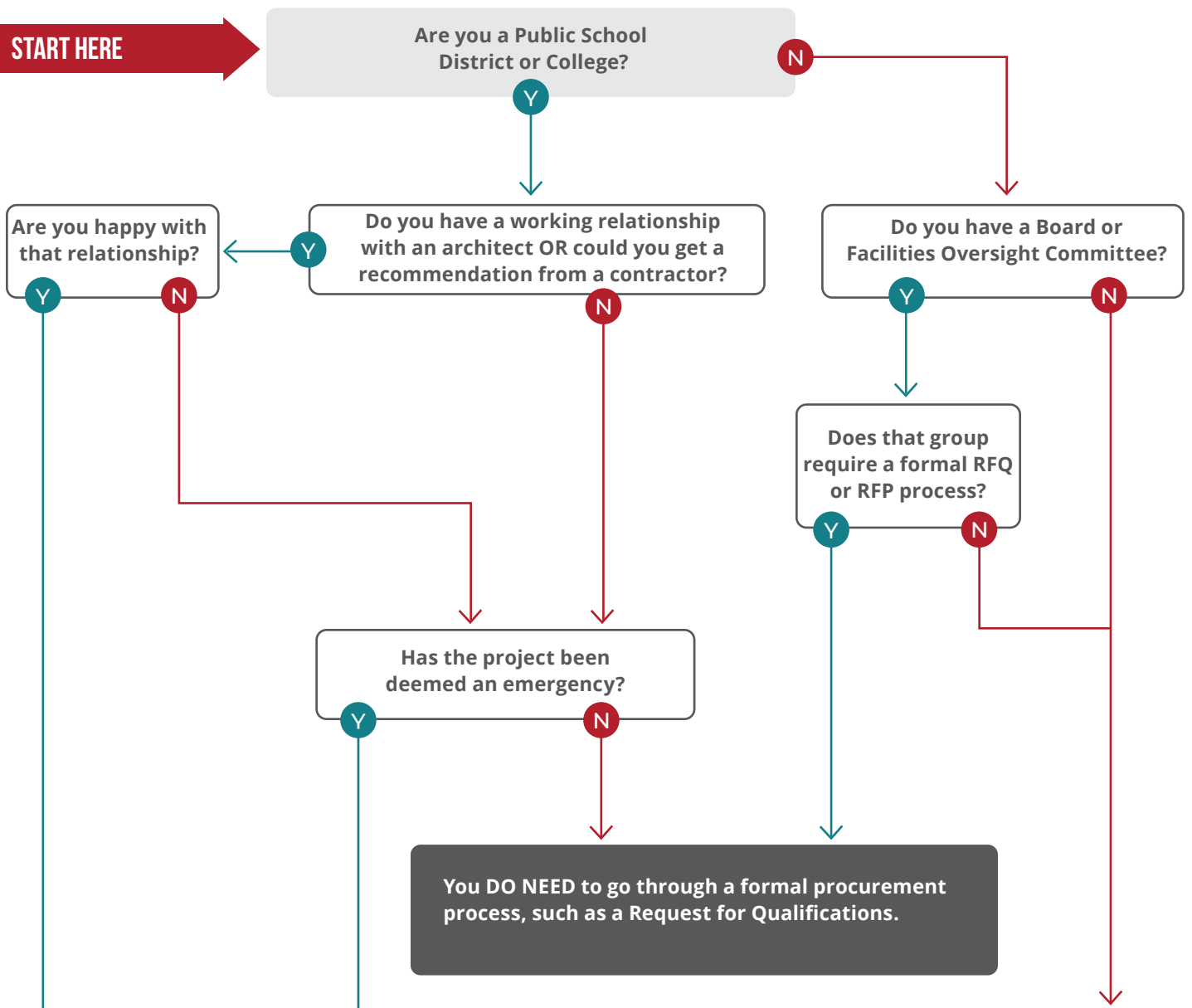


Choosing the Right Path

HOW TO HIRE AN ARCHITECT



Not sure if you need a formal procurement process? Before spending hours on an RFQ or convincing your board you don't need one, follow the decision path below—it'll help you fast-track your architect hire or confirm if the long (but legally required) route is necessary!



* This amount varies by state. Your architect can help you determine the correct amount based on your location.

You do NOT need to go through a formal procurement process. You can hire the architect you currently work with or the one of your preference.